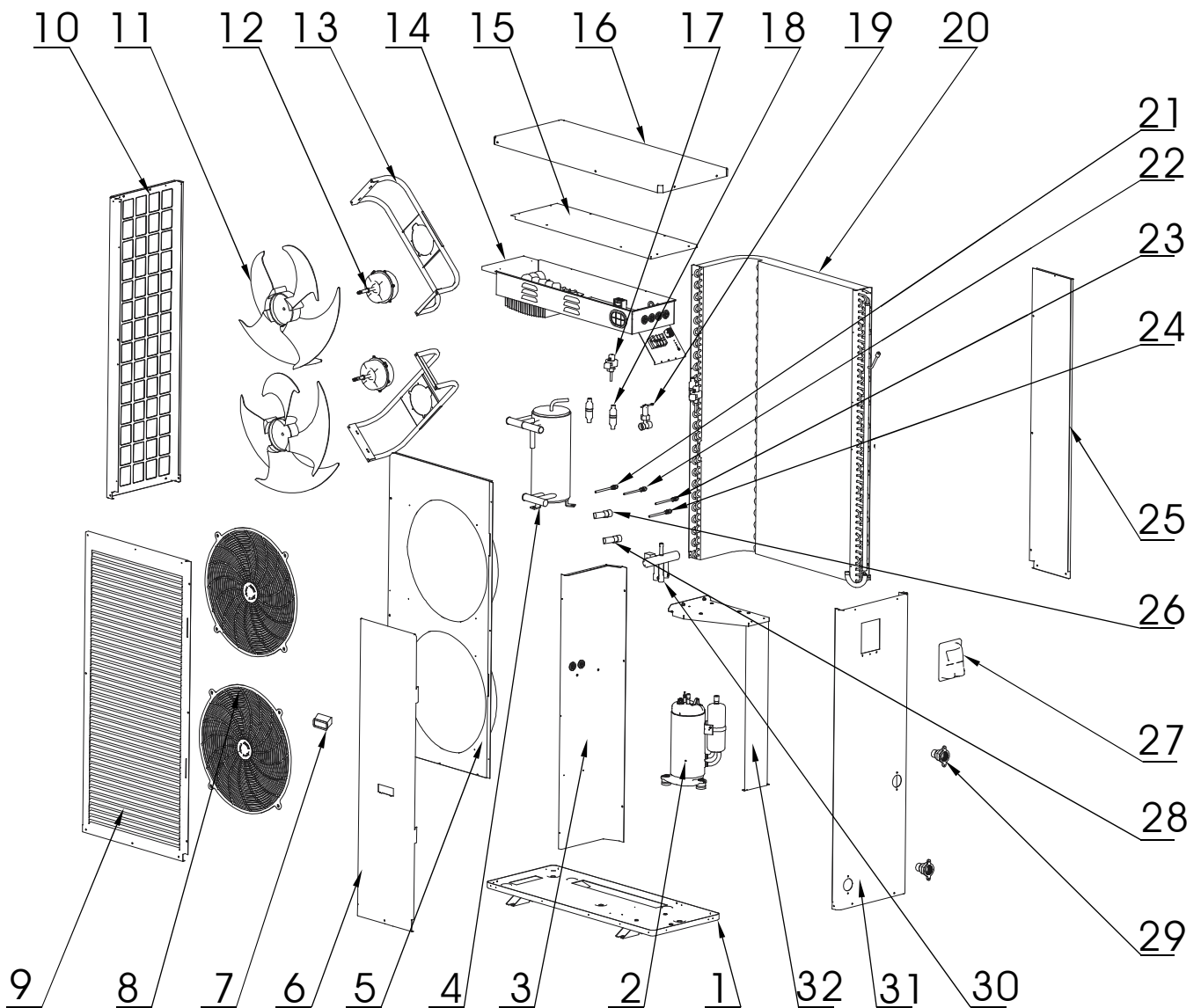
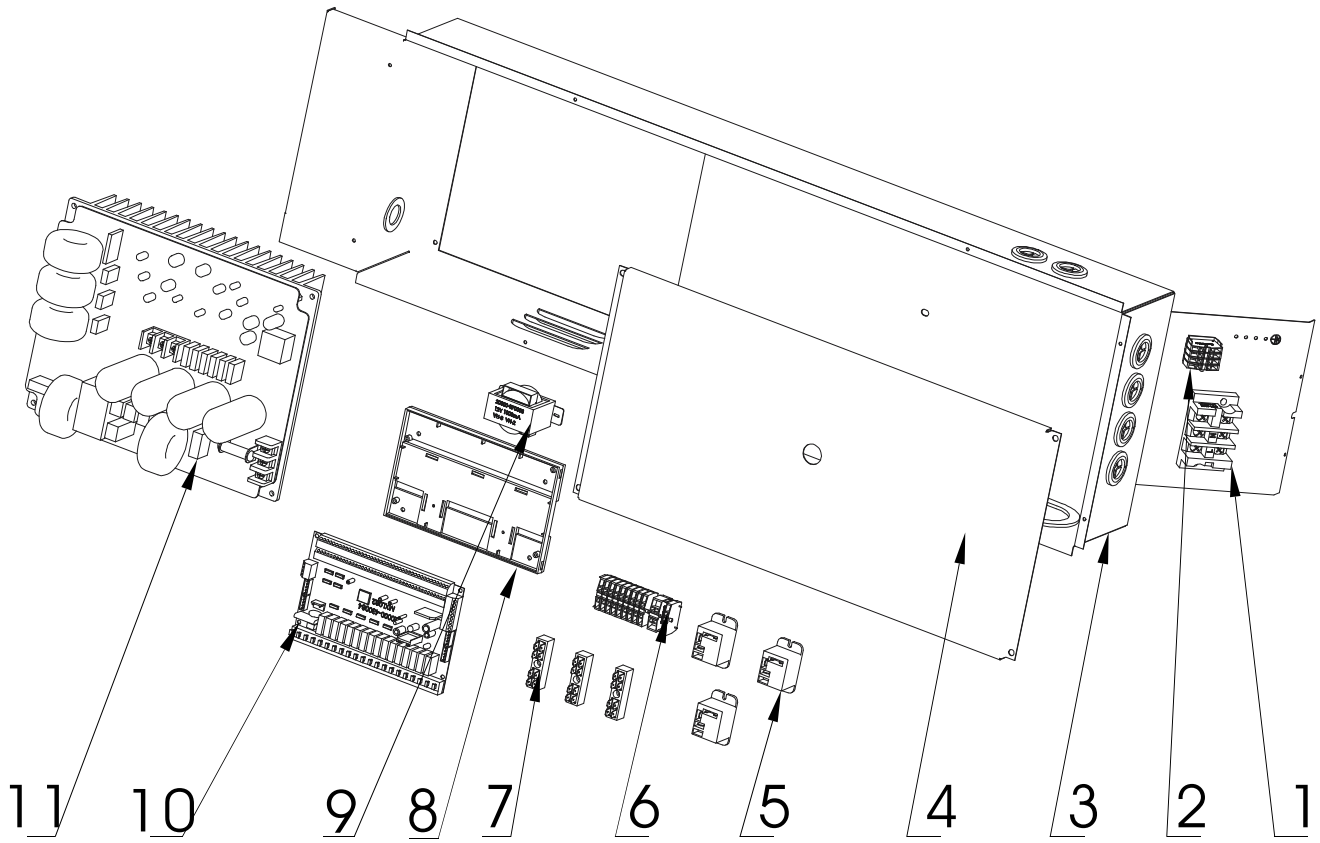


# H15B



No.	Part code	Part name	Qty	No.	Part code	Part name	Qty
1	35010-210189	Chassis	1	20	35010-120027	Finned tube HE	1
2	20000-110296	Compressor	1	21	20000-140512	Needle valve	2
3	35010-210191	Middle panel	1	22	20000-140153	Needle valve	2
4	35010-120034	Tube in shell HE	1	23	20000-360157	Pressure switch	1
5	35010-210192	Fan shroud	1	24	20000-360110	Pressure switch	1
6	35010-210197	Front right panel	1	25	35010-210216	Back panel	1
7	20001-220001	Handle	1	26	20000-360072	Pressure sensor	1
8	34006-210020	Fan shield	2	27	32009-220029	Wiring box	1
9	35010-210193	Front net	1	28	20000-360123	Pressure switch	1
10	35010-210217	Left net	1	29	20000-130312	Contact joint	2
11	20000-270004	Fan blade	2	30	2001-1491	Four-way valve	1
12	20000-330143	DC fan motor	2	31	35010-210199	Right panel	1
13	35019-210052	Fan support	2	32	35010-210201	Tube in shell HE support	1
14	65010-010079	Electric assembly	1				
15	35010-210149	Electric box cover	1				
16	35010-210196	Top cover	1				
17	20000-140519	EEV	1				
18	20000-140027	Filter	2				
19	20000-360249	Water flow switch	1				

# H15B



No.	Part code	Part name	Qty	No.	Part code	Part name	Qty
1	20000-390222	3 digit wire holder	1	9	20000-370048	Transformer	1
2	20000-390048	Terminal	3	10	20000-430084	Pc8002 controller	1
3	35010-210195	Electric box	1	11	20000-310165	Driver	1
4	35010-210194	Electric box panel	1				
5	20000-360203	Relay	2				
6	20000-390049	Terminal	14				
7	2000-3909	2 digit wire holder	3				
8	20000-220274	PC8002 controller bottom	1				